



ddrum.

ddrum.

2019 PRODUCT CATALOG





Table of Contents

Acoustic Drums

Dios	4 - 5
M.A.X	6
Hybrid	7
Journeyman	8 - 9
SE Flyer	10
D Series	11 - 15

Snare Drums 16 - 17

Hardware 18 - 22

Deccabons 23

Electronic Drums 24 - 25

Electronics 26 - 27

Triggers 28 - 29

Bags & Merch 30 - 31

SKU:

DS MP 320

DS MP 324

DS MP 522

DIOS

**snare**

shell: maple
plies: 8
shell thickness: 8mm
hoop: 2.3mm triple flanged
bearing edge: 30/45 degree
hardware: chrome
tone: warm to bright: excellent projection

toms

shell: maple
plies: 6
shell thickness: 5.6mm
hoop: 2.3mm triple flanged
bearing edge: 30/45 degree
hardware: chrome
tone: warm to bright: excellent projection

bass drum

shell: maple
plies: 6
shell thickness: 6mm
hoop: maple
bearing edge: 30/45 degree
hardware: chrome
tone: warm to bright: excellent projection

Finishes:

Satin Gold



Red Cherry Sparkle



Emerald Green Sparkle



Satin Black

Add ons:Snare Drums:
7x13, 6.5x14Rack Toms:
7x8, 7x10, 8x12,
9x13Floor Toms:
14x14, 14x16, 16x18Bass Drums:
20x20, 20x22, 20x24**Configuration #1:**

Rack: 7x10, 8x12 Floor: 14x14, 14x16
Bass: 20x22

**Configuration #2:**

Rack: 8x12 Floor: 14x14
Bass: 20x20

**Configuration #3:**

Rack: 9x13 Floor: 14x16
Bass: 20x24



*Includes integrated Tom Arm/Clamp & Floor Tom Legs

* Hardware and Cymbals sold separately

for more information visit www.ddrum.com

SKU:

DS MPZ 522

NEW FOR 2019

DIOS EXOTIC LIMITED



snare

shell: maple, zebra wood exotic veneer
plies: 8
shell thickness: 8mm
hoop: die-cast
bearing edge: 30/45 degree
hardware: black chrome
tone: warm to bright: excellent projection

Finishes:



Zebra Wood

toms

shell: maple, zebra wood exotic veneer
plies: 6
shell thickness: 5.6mm
hoop: 2.3mm triple flanged
bearing edge: 30/45 degree
hardware: black chrome
tone: warm to bright: excellent projection

Add ons:



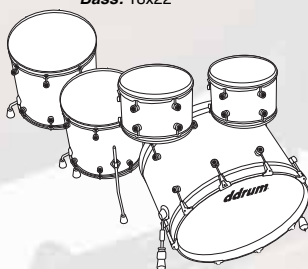
Snare Drums:
6.5x14

bass drum

shell: maple, zebra wood exotic veneer
plies: 6
shell thickness: 6mm
hoop: maple
bearing edge: 30/45 degree
hardware: black chrome
tone: warm to bright: excellent projection

Configuration #1:

Rack: 7x10, 8x12 Floor: 14x14, 14x16
Bass: 18x22



*Includes integrated Tom Arm/Clamp & Floor Tom Legs

* Hardware and Cymbals sold separately



SKU:

MAX 322, MAX 324

M·A·X



toms

shell: maple/alder
plies: 2 outer maple/ 6 inner alder
shell thickness: 7mm
hoop: 2.3mm triple flanged
bearing edge: 30/45 degree
hardware: ddrum tube lug & box throw off
tone: mid to high: excellent projection

bass drum

shell: maple/alder
plies: 2 outer maple/ 6 inner alder
shell thickness: 8mm
hoop: maple
bearing edge: 30/45 degree
hardware: ddrum tube lug, die cast claws
tone: resonant with enhanced low end

Finishes:



Piano Black



Satin Natural

Add ons:



Snare Drums:
5x14, 6.5x14



Rack Toms:
7x8, 7x10, 9x13



Floor Toms:
14x14, 16x18



Bass Drums:
18x22, 14x24

Configuration #1:

Rack: 8x12 **Floor:** 14x16
Bass: 18x22



Configuration #2:

Rack: 8x12 **Floor:** 14x16
Bass: 14x24



*Includes integrated Tom Arm/Clamp & Floor Tom Legs
* Hardware and Cymbals sold separately
for more information visit www.ddrum.com

SKU:

HYBRID 6 BLK RED

HYBRID 6 WHT

HYBRID 5 PLAYER

HYBRID 5 PLAYER WHT

HYBRID



snare

shell: birch
plies: 8
shell thickness: 7mm
hoop: 1.6mm triple flanged
bearing edge: 45 degree
hardware: red hybrid lug & box throwoff
tone: **bright & cutting**

toms

shell: birch
plies: 6
shell thickness: 7mm
hoop: 1.6mm triple flanged
bearing edge: 45 degree
hardware: red hybrid lug & RIMS mounts
tone: **bright & great projection**

bass drum

shell: alder
plies: 8
shell thickness: 8mm
hoop: alder
bearing edge: 45 degree
hardware: red hybrid lug & die-cast bass drum claws
tone: **warm, dark, punchy**

Finishes:



Black

White

Add ons:



Snare Drums:
6x13

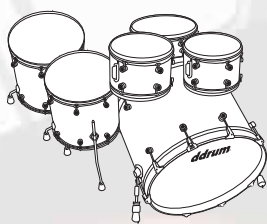


Bass Drums:
20x20

* Satin Black Only

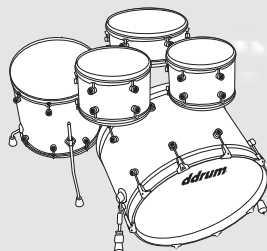
Configuration #1:

Snare: 6x13 **Rack:** 7x10, 7x12 **Floor:** 12x14, 12x16
Bass: 20x20



Configuration #2:

Snare: 6x14 **Rack:** 7x10, 8x12 **Floor:** 14x16, 12x16
Bass: 18x22



* Hardware and Cymbals sold separately



SKU:

J2R 524

J2 RAMBLER



snare

shell: basswood/birch

plies: 8

shell thickness: 8mm

hoop: 1.6mm triple flanged

bearing edge: 45 degree

hardware: powder-coated hybrid lug
& box throwoff

tone: **warm to bright:** punch & projection

toms

shell: basswood/birch

plies: 6

shell thickness: 7mm

hoop: 1.6mm triple flanged

bearing edge: 45 degree

hardware: powder-coated hybrid lug &
RIMS mounts

tone: **warm to bright:** punch & projection

bass drum

shell: basswood/birch

plies: 8

shell thickness: 8mm

hoop: steel

bearing edge: 45 degree

hardware: powder-coated hybrid lug

tone: **enhanced low end:** well-balanced

includes

- bass drum pedal
- bass drum tom mount
- boom stand
- hi hat stand
- snare stand

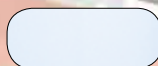
Finishes:



Black Sparkle



Red Red Sparkle



White



Blaze Orange

Configuration:

Snare: 7x13 4 **Rack:** 8x12 **Floor:** 14x14, 14x16 **Bass:** 16x24



SKU:

J2P 522

J2 PLAYER



snare

shell: basswood/birch
plies: 8
shell thickness: 8mm
hoop: 1.6mm triple flanged
bearing edge: 45 degree
hardware: powder-coated hybrid lug & box throwoff
tone: **warm to bright:** punch & projection

toms

shell: basswood/birch
plies: 6
shell thickness: 7mm
hoop: 1.6mm triple flanged
bearing edge: 45 degree
hardware: powder-coated hybrid lug & RIMS mounts
tone: **warm to bright:** punch & projection

bass drum

shell: basswood/birch
plies: 8
shell thickness: 8mm
hoop: steel
bearing edge: 45 degree
hardware: powder-coated hybrid lug
tone: **enhanced low end:** well-balanced

includes

- bass drum pedal
- bass drum tom mount
- boom stand
- hi hat stand
- snare stand

Finishes:



Configuration:

Snare: 7x134 **Rack:** 7x10, 8x12 **Floor:** 14x14 **Bass:** 18x22



SKU:

SE FLYER

SE FLYER NAT ASH

SE FLYER



Finishes:



Ash



Blue Pearl



White Pearl

Configuration:

Snare: 5.5x14 **Rack:** 8x12 **Floor:** 14x14 **Bass:** 14x18



* Hardware and Cymbals sold separately



*Includes Bass Drum Riser

snare

shell: basswood

plies: 8

shell thickness: 7mm

hoop: 1.6mm triple flanged

bearing edge: 45 degree

hardware: chrome "turret" lug & box throwoff

tone: **wrm to bright:** excellent projection

toms

shell: basswood

plies: 6

shell thickness: 7mm

hoop: 1.6mm triple flanged

bearing edge: 45 degree

hardware: chrome "turret" lug & RIMS mounts

tone: **mid to low:** warm, medium high

bass drum

shell: basswood

plies: 8

shell thickness: 7mm

hoop: maple

bearing edge: 45 degree

hardware: chrome "turret" lug

tone: **enhanced low end:** well-balanced



SKU:

D2

D2



snare

shell: basswood
plies: 8
shell thickness: 8mm
hoop: 1.6mm triple flanged
bearing edge: 45 degree
hardware: D series chrome & lever throw off
tone: **warm to bright:** punch & projection

toms

shell: basswood
plies: 6
shell thickness: 7mm
hoop: 1.6mm triple flanged
bearing edge: 45 degree
hardware: D series chrome
tone: **mid to low:** warm & focused

bass drum

shell: basswood
plies: 8
shell thickness: 8mm
hoop: metal
bearing edge: 45 degree
hardware: low industrial mass
tone: **enhanced low end:** well-balanced

includes

- 14" hi hat with stand
- snare stand
- straight stand
- tom arms
- 16" crash/ride cymbal
- bass drum pedal
- throne
- pair of drumsticks with bag

Finishes:



Configuration:

Snare: 5.5x14 **Rack:** 7x10, 9x12 **Floor:** 14x16 **Bass:** 18x22



SKU:

D2R

D2 ROCK



snare

shell: basswood
plies: 8
shell thickness: 8mm
hoop: 1.6mm triple flanged
bearing edge: 45 degree
hardware: low industrial mass/lever throw off
tone: **mid to low**: warm, medium high

toms

shell: basswood
plies: 6
shell thickness: 7mm
hoop: 1.6mm triple flanged
bearing edge: 45 degree
hardware: low industrial mass
tone: **mid to low**: warm, medium high

bass drum

shell: basswood
plies: 8
shell thickness: 8mm
hoop: metal
bearing edge: 45 degree
hardware: low industrial mass
tone: **enhanced low end**: well-balanced

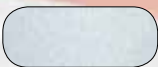
includes

- 14" hi hat with stand
- snare stand
- half boom arm
- tom arm & mount
- 16" crash/ride cymbal
- bass drum pedal
- throne
- pair of drumsticks

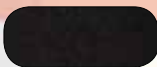
Finishes:



Lime Sparkle



Silver Sparkle



Black Sparkle

Add ons:



Rack Toms:
7x10



Floor Toms:
12x14

Configuration:

Snare: 5.5x14 Rack: 8x12 Floor: 14x16 Bass: 18x22



SKU:

D2P

D2 PLAYER



snare

shell: basswood
plies: 8
shell thickness: 8mm
hoop: 1.6mm triple flanged
bearing edge: 45 degree
hardware: low industrial mass/lever throw off
tone: **warm to bright**: punch & projection

toms

shell: basswood
plies: 6
shell thickness: 7mm
hoop: 1.6mm triple flanged
bearing edge: 45 degree
hardware: low industrial mass
tone: **warm to bright**: punch & projection

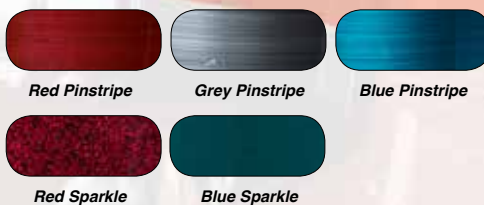
bass drum

shell: basswood
plies: 8
shell thickness: 8mm
hoop: metal
bearing edge: 45 degree
hardware: low industrial mass
tone: **enhanced low end**: well-balanced

includes

- 14" hi hat with stand
- 16" crash/ride cymbal
- 16" cymbal
- bass drum pedal
- snare stand
- throne
- boom stand
- pair of drumsticks
- tom arms
- bass drum mount

Finishes:



Configuration:

Snare: 5.5x14 **Rack:** 7x10, 8x12 **Floor:** 14x16 **Bass:** 18x22



SKU:

D120B

D120B



snare

shell: basswood
plies: 8
shell thickness: 8mm
hoop: 1.6mm triple flanged
bearing edge: 45 degree
hardware: lever throw off
tone: **warm to bright**: excellent projection

toms

shell: basswood
plies: 6
shell thickness: 7mm
hoop: 1.6mm triple flanged
bearing edge: 45 degree
hardware: D series
tone: **mid to low**: warm

bass drum

shell: basswood
plies: 8
shell thickness: 8mm
hoop: maple
bearing edge: 45 degree
hardware: D Series
tone: **enhanced low end**: well-balanced

includes

- 14" hi hat with stand
- 16" crash/ride cymbal
- snare stand
- straight cymbal stand
- tom arms
- bass drum pedal
- throne
- pair of drumsticks

Finishes:



Blood Red

Midnight Black

Configuration:

Snare: 5.5x14 **Rack:** 8x10, 9x12 **Floor:** 14x14 **Bass:** 16x20



SKU:

D1

D1 JUNIOR



Finishes:



Configuration:

Snare: 4x12 **Rack:** 5x8, 5x10 **Floor:** 14x16 **Bass:** 10x16



snare

shell: basswood
plies: 8
shell thickness: 8mm
hoop: 1.6mm triple flanged
bearing edge: 45 degree
hardware: D series chrome & lever throw off
tone: **warm to bright:** punch & projection

toms

shell: basswood
plies: 6
shell thickness: 7mm
hoop: 1.6mm triple flanged
bearing edge: 45 degree
hardware: D series chrome
tone: **warm to bright:** punch & projection

bass drum

shell: basswood
plies: 8
shell thickness: 8mm
hoop: metal
bearing edge: 45 degree
hardware: chrome "turret" lug
tone: **enhanced low end:** well-balanced

includes

- hi hat with stand
- snare stand
- cymbal stand
- tom arms
- crash/ride cymbal
- bass drum pedal
- throne
- pair of drumsticks





NEW FOR 2019

Bamboo

size: 6.5x14
 shell: bamboo
 finish: bamboo
 shell thickness: 10ply 8mm
 hoop: diecast hoops
 hardware: 10 lug, ddrum classic style tube lug
 other: Heads made for ddrum by Evans in Taiwan
SKU: DS SD 6.5x14 BAM



Hammered Bronze

size: 6.5x14
 shell: bronze
 finish: bronze
 shell thickness: 1.5mm
 hoop: diecast hoops
 hardware: 10 lug, ddrum classic style tube lug
 other: Heads made for ddrum by Evans in Taiwan
SKU: DS SD 6.5x14 HHB



Zebra

size: 6.5x14
 shell: 100% north american maple
 finish: multi colored stripe lacquer
 shell thickness: 8ply 8mm
 hoop: diecast hoops
 hardware: 10 lug, ddrum classic style tube lug
 other: Heads made for ddrum by Evans in Taiwan
SKU: DS SD 6.5x14 ZEBRA



Cast Chrome

size: 7x14
 shell: cast steel
 finish: mirror chrome
 shell thickness: 3mm
 hoop: diecast hoops
 hardware: 10 lug, ddrum classic style tube lug
 other: Heads made for ddrum by Evans in Taiwan
SKU: DS SD 7x14 CC

Metal Snare Drums



MODERN TONE: BRASS

SKU#: MT SD 6.5X14 BRASS
Size: 6.5x14
Shell: 1.5mm thick brass
Lugs: 10 double sided face off lugs
Hoop: Die-cast hoops
Additional: Chrome hardware, Dunnett R4 throw off, ddrum by Evans drum head



MODERN TONE: PATINA

SKU#: MT SD 7X14 BKB
Size: 7x14
Shell: 1.0mm thick weathered brass with center bead
Lugs: Tube lugs
Hoop: 2.3 Triple flanged
Additional: Nickel hardware, Dunnett R4 throw off, ddrum by Evans drum head



MODERN TONE: STEEL

SKU#: MT SD 8X14 STEEL
Size: 8x14 steel 1mm thick shell
Shell: 1mm thick steel
Lugs: 10 double sided face off lugs
Hoops: Triple flanged
Additional: Dunnett R4 Throw off, ddrum by Evans drum head



STEEL PICCALO

SKU#: MT SD 3.5X14 STEEL
Size: 3.5x14
Shell: 1mm thick steel
Lugs: Staggered 8 lug top/bottom
Hoops: 1.6mm triple flanged
Additional: Lever throw off,



THE TATTOOED LADY

SKU#: TATTOOED LADY
Size: 6.5x14
Shell: 1mm black chrome
Lugs: 10 double sided face off lugs
Hoops: 2.3mm black nickel
Additional: Box throw off, Evans batter head, Custom engraved scrollwork

Wood Snare Drums



MAX: SATIN NATURAL

SKU#: MAX SD 6.5X14 SN
Size: 6.5x14
Shell: 2ply maple & 6ply alder with satin natural finish
Lugs: 10 double sided tube lugs
Hoops: Die-cast hoops
Additional: Black chrome hardware, Box throw off, Evans coated snare head



MAX: SATIN NATURAL

SKU#: MAX SD 5X14 SN
Size: 5x14
Shell: 2ply maple & 6ply alder with satin natural finish
Lugs: 10 double sided tube lugs
Hoops: Die-cast hoops
Additional: Black chrome hardware, Box throw off, Evans coated snare head



MAX: PIANO BLACK

SKU#: MAX SD 6.5X14 PB
Size: 6.5x14
Shell: 2ply maple & 6ply alder with Piano black lacquer
Lugs: 10 double sided tube lugs
Hoops: Die-cast hoops
Additional: Black chrome hardware, Box throw off, Evans coated snare head



MAX: PIANO BLACK

SKU#: MAX SD 5X14 PB
Size: 5x14
Shell: 2ply maple & 6ply alder with Piano black lacquer
Lugs: 10 double sided tube lugs
Hoops: Die-cast hoops
Additional: Black chrome hardware, Box throw off, Evans coated snare head



HYBRID

SKU#: HY SD 6X13 SB
Size: 6x13
Shell: 6mm thick Birch Lugs: Built in Trigger
Lugs: 8 hybrid lug snare
Hoop: Die-cast hoops
Additional: Shell mounted XLR Jack, Satin Black lacquer finish, Box Throw off, Remo UT reverse dot drum head



VINNIE PAUL SIGNATURE CHROME

SKU#: VP SD 8X14 CHROME
Size: 8x14
Shell: 2ply maple & 6ply alder with chrome wrap
Lugs: 10 double sided face off lugs
Hoops: Die-cast hoops
Additional: Chrome wrap, Black nickel shell hardware, Dunnett R4 throw off, Evans batter head, Vinnie Paul Signature Badge

ddrum

DRUM PEDALS

[Mercury] Single



MSBP

- Rapid, responsive pedal action
- Solid, tour-quality construction
- Distinctive Art Deco Mercury logo design on footboard
- Twin-surface beater
- Drum key (included) attached to floor plate

[Mercury] Double



MDBP

- Rapid, responsive pedal action
- Solid, tour-quality construction
- Distinctive Art Deco Mercury logo design on footboard
- Twin-surface beater
- Drum key (included) attached to floor plate

[QuickSilver] Single



QSSBDP

- Long board pedal design
- Smooth action for speed and precision
- Adjustable beater distance
- Offers the option to swap out the direct drive to a chain drive pedal

Includes:

- Multi tool
- Heel block
- Chain Cam
- Footboard weight

[QuickSilver] Double



QSDBDP

- Long board pedal design
- Smooth action for speed and precision
- Adjustable beater distance
- Offers the option to swap out the direct drive to a chain drive pedal
- Includes Multi-tool

Includes:

- Multi tool
- Heel block
- Chain Cam
- Footboard weight

[RX] Single



RXP

- Adjustable beater angle
- Sturdy construction
- Dual chain design
- Felt-lined chain channel for quiet action
- Quad beater
- Custom design RX foot board

[RX] Double



RXDP

- Adjustable beater angle
- Sturdy construction
- Dual chain design
- Felt-lined chain channel for quiet action
- Quad beater
- Custom design RX foot board

ddrum®

HARDWARE & STANDS

[Mercury] Double Tom Stand



MDTS

- Heavy duty double tom stand
- Accommodates drums 8 inches to 16inch floor toms
- Double braced
- Includes ddrum branded wing nuts
- 12mm thick L rod posts
- Max height approximately 39 inches
- Lowest height approximately 22 inches
- 22mm and 27mm tube diameters
- Compatible with Mercury Dog bone attachments

[RX] Double Tom Stand



RXDTs

- Double tom stand mount
- Double braced legs
- Detachable tom arms with memory locks
- 10.5 mm L rods for tom arms
- Adjustable height is approximately 29 inches to 35 inches
- 3 post mount to accommodate cymbal arm attachment
- Tube diameters 25mm bottom/22mm top

Boom/Cymbal Stands

[Mercury] 3 Tier Boom Stand



MB3

- Convertible boom to straight stand
- Double Braced hardware
- 3 tier boom stand
- Tube diameters 15mm, 22mm and 27mm
- Signature branded ddrum wing nuts
- Molded memory locks
- Boom length approximately 16 inches
- Max height approximately 65 inches
- Lowest height approximately 35 inches

[RX Pro] 3 Tier Boom Stand



RXB3 PRO

- 3 tier boom cymbal stand
- Micro gear tilter for limit less adjust ability
- Double braced
- Hide away boom
- 15 inch length boom arm
- Memory lock included
- 22mm, 25mm and 28.6mm tube diameters

[RX] Boom Stand



RXB3

- Convertible to Boom/Straight
- Double braced legs
- Tube diameters 19mm, 22mm, 25mm
- Approximate max hat. 61 inches
- Approximate lowest hat. 32 inches
- Approximate boom length is 15 inches

[RX] Cymbal Stand



RXCS

- Basic straight stand
- Double braced legs
- Tube diameters 19mm, 22mm, 25mm
- Approximate max hat. 61 inches
- Approximate lowest hat. 32 inches

[RX] Boom Arm Attachment



RXCH

- Boom arm cymbal attachment
- Micro gear tilter for limit less adjust ability
- 15 inch length boom arm
- 15 inch length down tube
- Memory lock included
- 19 mm boom arm
- 22 mm down tube
- Works with the RXC, RXMC, RXDTs

[RX] Hardware Pack



RXHP

- RX hardware pack includes the following
- 1- RXHH - Hi hat stand
- 1- RXSS- Snare drum stand
- 1- RXP- Bass drum pedal
- 1- RXB3- Boom cymbal stand
- 1- RXCS- Straight cymbal stand

Snare Stands

[Mercury] Snare Stand



MSS

- Fits snare drum sizes 8-15 inches
- Double braced legs
- Included ddrum branded wing nut
- Adjustable basket and flexible positioning
- 22mm and 27mm sized tubes
- Max height approximately 24 inches
- Lowest height approximately 15 inches

[RX] Snare Stand



RXSS

- Fits snare drums 12inch to 14inch
- Adjustable basket
- Height range is 19inches to 23.5inches
- Tube diameter is 22mm/25mm

[Mercury] Snare Stand



MFBSS

- Fits snare drum sizes 8-15 inches
- Double braced legs
- Included ddrum branded wing nut
- Adjustable basket and flexible positioning
- 22mm and 27mm sized tubes
- Max height approximately 24 inches
- Lowest height approximately 15 inches

Hi Hat Stands

[Mercury] 2 Legged Hi Hat Stand



MHH2L

- Double-braced Mercury quality
- Distinctive Art Deco Mercury logo design on footboard
- True direct pull system for fast hi hat action
- Locking foot plate
- Adjustable spring tensioning unit
- Mercury molded feet for grip and resonance
- Molded memory locks
- 22mm and 27mm tube diameters
- Max height approximately 41 inches
- Lowest height approximately 27 inches

[Mercury] 3 Legged Hi Hat Stand



MHH3L

- Double-braced Mercury quality
- Distinctive Art Deco Mercury logo design on footboard
- True direct pull system for fast hi hat action
- Locking foot plate
- Adjustable spring tensioning unit
- Mercury molded feet for grip and resonance
- Molded memory locks
- 22mm and 27mm tube diameters
- Max height approximately 41 inches
- Lowest height approximately 27 inches

[RX Pro] 2 Legged Hi Hat Stand



RXHH2LPRO

- Double braced heavy duty 2 legged hi hat stand
- Rotating legs to accommodate double pedals
- 4 chain direct pulley system for smooth feel
- ddrum RX footboard
- Approximate height range from 29 to 35 inches
- Tube diameters 25mm top tube 28.6 mm bottom tube.

[RX Pro] 3 Legged Hi Hat Stand



RXHH3LPRO

- Double braced heavy duty 2 legged hi hat stand
- Rotating legs to accommodate double pedals
- 4 chain direct pulley system for smooth feel
- ddrum RX footboard
- Approximate height range from 29 to 35 inches
- Tube diameters 25mm top tube 28.6 mm bottom tube.

[RX] Hi Hat Stand



RXHH

- Single direct Chain pull action
- Double braced legs
- Height adjustment from 27.5 inches to 33.5
- Tube diameter is 22mm/25mm

ddrum®

MISCELLANEOUS HARDWARE

D-Bones

[Mercury] D-Bone Boom Arm (S)



MDBS

- 2 pc set
- 9inch Arm
- Accessory boom arm
- Fits Mercury double tom post
- Fits Mercury boom arm post

[Mercury] D-Bone Boom Arm (L)



MDBL

- 2 pc set
- 11inch Arm
- Accessory boom arm
- Fits Mercury double tom post
- Fits Mercury boom arm post

Clamps

[Mercury] D-Bone Style Multi Clamp



MDBC

- Great accessory arm to use to attach:
- Cymbals
- Toms, and any other percussion items
- Approximately 10.5 inches long and both clamps are fully adjustable.

[RX] Multi Adjustable Clamp



RXMC

- Multi adjustable clamp
- Tilters on both side for many mounting options
- Middle adjustment for even more mounting possibilities
- Great for mounting Cymbal arms or other percussion items
- Fits almost all size tube diameters
- Smallest acceptable tube is 19mm
- 7inches in Length

[RX] Two Sided Clamp



RXC

- Basic chrome plated clamp
- Two sided to attach cymbal arms or other percussion items
- 6.5 inches in length
- Fits almost all size tube diameters
- Can accommodate tube as small as 19mm

[Mercury] Cymbal Boom Attachment



MCBA

- 15inch long boom arm
- 12mm diameter boom arm
- Includes fully adjustable mounting clamp.
- Fully adjustable tilter
- Perfect for small or effects cymbals

[Mercury] Hi Hat Attachment



MXHAT

- 15inch boom arm
- 12mm diameter boom arm
- Spring loaded hi hat mounting
- Easy set up for closed to open hi hat playing
- Includes adjustable mounting clamp

[Mercury] Hi Hat / Bass Clamp



MBHC

- L arm connector (9.5mm)
- 2 clamps (one for hi hat and one for the bass hoops)
- Mounting post.
- Rubber gaskets mounting bracket for the bass drum hoop to prevent any damage to the finish.
- Fully adjustable to fit any desired setup.

ddrum®

DRUM THRONES

[Mercury] FAT Throne



MFATRB, MFATGB, MFATWB, MFATWP

- 5.5 inch thick throne
- Sparkle Vinyl
- Double braced legs
- Adjustable Height (Between 19-27 inches)
- Multiple

[Mercury] FAT Throne



MSTT BLK

- Saddle style throne
- Black vinyl finish
- Double braced legs
- Adjustable Height Between 19-27 inches)

[Mercury] Motorcycle Style



MBTT, MRTT

- Thick velvet-top motorcycle seat style
- Screw post for low sitting
- Double braced legs
- Adjustable Height (Between 19-25.5 inches)
- Double D-Wing screws
- Molded Feet

[RX] Swivel Throne



RXDT2

- 280mm thick Round top seat
- Adjustable height range from 19inch to 24 inches
- Rotating center post for height adjustment
- Double braced
- 28.6 mm bottom tube.

[RX] Lightweight Throne



RXDT

- Basic student drum throne
- 19inches to 25inch height adjustment
- Tube diameters are 25mm / 28.6mm
- 280 mm diameter round top seat

ddrum[®] DECCABONS

When enough is not enough, we give you Deccabons! Black-finished, fiberglass shells, 6" in diameter and in lengths from 6" to 24"... the perfect accent to your kit.

Deccabons' pitch are determined by shell depth, rather than diameter. Mount them in traditional descending order, or place them around the kit for unexpected accents. Expand your sonic palette!



6" - 8" DECCABONS



DECCABON F 0608

- 6" - 8" Deccabons
- Satin black finish
- Fiberglass shell
- D Series chrome oval lug
- 1.6mm triple flanged hoops
- 45 degree bearing edge

10" - 12" DECCABONS



DECCABON F 1012

- 10" - 12" Deccabons
- Satin black finish
- Fiberglass shell
- D Series chrome oval lug
- 1.6mm triple flanged hoops
- 45 degree bearing edge

14" - 16" DECCABONS



DECCABON F 1416

- 14" - 16" Deccabons
- Satin black finish
- Fiberglass shell
- D Series chrome oval lug
- 1.6mm triple flanged hoops
- 45 degree bearing edge

18" - 20" DECCABONS



DECCABON F 1820

- 18" - 20" Deccabons
- Satin black finish
- Fiberglass shell
- D Series chrome oval lug
- 1.6mm triple flanged hoops
- 45 degree bearing edge

22" - 24" DECCABONS



DECCABON F 2224

- 22" - 24" Deccabons
- Satin black finish
- Fiberglass shell
- D Series chrome oval lug
- 1.6mm triple flanged hoops
- 45 degree bearing edge

DD BETA PRO

SKU:

DD BETA PRO

kit

- 3 sided rack system with red aluminum uprights.
- 8.5 inch tom, snare and bass drum pads
- Dual zone tom pads
- Dual zone crash cymbal w/ choke
- Triple zone snare
- Triple zone ride cymbal w/ choke
- Hi hat pad with continuous hi hat functions, (open/close, foot splash, half open
- Includes headphones.
- Module features 3 extra inputs for adding pads or cymbals.
- **Module includes SD card slot for importing you own sounds via WAV file**

module

- 170 Percussion sounds
- 33 Preset drum kits
- 4 user kits
- 12 Midi songs to play along with
- Line in to connect MP3,ipod or Phone
- Record function
- Parameter adjustments for pad sensitivity
- Metronome
- 1/4 L/R stereo outputs.
- MIDI OUT
- USB OUT
- SD Card slot for adding sounds
- 3 -1/4 inputs for extra pads
- Reverb function
- Headphone input



DD BETA D-LITE

SKU:

DD BETA D LITE

kit

- 4 - Single zone drum pads
 - 1 - Single zone pad to be used as hi hat cymbal
 - 1 - Hi hat controller
 - 1 - Bass drum controller
 - 1 - Set of headphones
 - 1 - Pair of sticks
 - 1 - Compact adjustable rack
- Adjustable rack can be set to a low of 24 inches up to 32 inch high overall dimesnion of the kit is 11x18x24/32

module

- Module Features 10 1/4 inputs
- MIDI OUT
- LINE IN 1/8 input
- Headphone output/Stereo output
- 32 Preset drum kits
- 168 sounds
- Metronome



DD BETA XP2



UPDATED FEATURES

- Updated rack system. Compact but sturdy, includes new red aluminum uprights
- Updated tom pads, bigger compared to the previous model. These pads are 8.5 inches
- Now includes headphones and throne
- Dual zone snare
- Single zone cymbals with choke.

SKU:

DD BETA XP2

kit

- Low profile rack system w/ red aluminum
- Throne included
- Headphones included
- Sticks included
- Dual zone snare drum
- 8.5 inch single zone tom pads
- 12 inch single zone cymbals with choke
- Continuous hi hat controller
- Complete electronic drumset with everything you need to play out of the box.

module

- 170 Percussion sounds
- 33 Preset drum kits
- 4 user kits
- 12 Midi songs to play along with
- Line in to connect MP3, ipod or Phone
- Record function
- Parameter adjustments for pad sensitivity
- Metronome
- MIDI OUT
- USB OUT
- Reverb function
- Headphone input





ddrum

Percussion Amps

DDA50



DDA50

Speaker 1x10 inch woofer.
2.5 inch Tweeter
2 - inputs 1/4 Plug in
1 - Aux input 1/4 Plug in
1 - headphone jack 1/8 Plug in
1 - MP3 jack 1/8 Plug
Details:
Output power 50W/8 Ohm X1 Speaker
500mW/32 Ohmx2 Headphone
3 - EQ controls for Low, mids and highs.
Volume control for channel 1 and 2 inputs

Modules & Interfaces

DDTi Trigger Interface



DDTi

- A simple way to convert your drum pads or triggers into MIDI
- 10 TRS trigger inputs accommodate single- or dual-zone triggers
- Multiple hi-hat control options let you get the expression you need
- Easy user interface makes creating and editing user setups painless
- USB output lets you control your virtual instrument drums
- MIDI output provides connectivity with hardware drum modules and synths
- Customizable trigger settings let you define the feel of your drums
- 20 programmable presets allow you to store and recall your setups

*Works as an input expander with virtually any drum module

*Velocity sensitive for expressive control

*Works plug-and-play with Mac and PC, no software drivers needed

DD5X Module



DD5XM

- 678 drum/percussion sounds
- 18 hi hat combinations
- 59 programmable & 40 preset drum kits
- 7-part, 220-song sequencer * metronome
- SD slot for saving kits, songs & settings
- four band equalizer plus reverb
- MIDI in/out, USB, AUX in/out, line out, headphone out

DD1 Plus Module



DD1 PLUS MODULE

- Will mount on cymbal stand top when mounting on Acoustic kit
- Parameter adjustments for Sensitivity, Gain and Rejection to accommodate all playing styles
- Individual volume control for each channel
- Onboard metronome
- 8 Trigger inputs
- 1 Hi hat controller input
- MIDI OUT
- AUX IN
- OUTPUT R/L MONO
- USB input
- 335 total Percussion sounds
- 11 User kits
- 24 preset kit
- 60 total play along songs
- Headphone plug in
- AUX volume control

CYMBAL PAD ACCESSORY



DD BETA CYM PACK

Contains:

- (1) Cymbal Pad
- (1) Stereo Cable
- (1) Adjustable Bar
- (1) 12.7" 400mm Steel Pipe
- Rack Connectors
- Wing Bolts
- Mounting Nuts

DRUM PAD ACCESSORY



DD BETA PAD PACK

Contains:

- (1) Drum Pad
- (1) Mono Cable
- (1) Adjustable Bar
- (1) 12.7" 400mm Steel Pipe
- Rack Connectors
- Wing Bolts
- Mounting Nuts

DD BETA BASS DRUM PAD UPGRADE



DD BETA BASS DRUM PAD

- DD BETA Pad upgrade for the DD BETA Electronic set. Plugs into Input 10. includes cable and pad. Bass drum pedal sold separately. This Pad can accommodate a double pedal and almost any brand single or double bass drum pedal.

*Includes Cable

Cables

6999 RA CABLE



- ddrum Mono Trigger/ Cable 15ft in length. Compatible with ddrum Acoustic Hybrid kits.
- XLR to 1/4 inch Cable
- 15ft in length
- PIN 2 HOT
- Works with Hybrid 6,5 Kits

6998 CABLE



- We use 24 gauge microphone wire and put a 2.5" pc of orange shrink under the barrel of the 1/4" TRS.
- XLR to 1/4 inch Cable
- 15ft in length
- PIN 2 HOT

6999 CABLE



- ddrum Mono Trigger/ Cable 15ft in length. Compatible with ddrum Acoustic Hybrid kits ...used to engage internal built in triggers on Hybrid 6,5

6997 Y CABLE



- ddrum cable made specially for ddrum Snare Triggers
- 15ft in length-XLR to 2 - 1/4 plugs.
- 1 for head Trigger and 1 for the Rim trigger

ddrum[®]

TRIGGERS

ddrum is the industry standard when it comes to acoustic drum triggering. All models of ddrum triggers can be used on all acoustic and Mesh type drum heads. ddrum triggers are compatible with almost all popular drum modules that feature a 1/4 inch trigger input. ddrum triggers use a patented Vectored Amplitude Measurement (VAM) transducer to pick up drum strikes. This gives a natural response from the triggers when sampling drum sounds from a drum module. (EX. When hitting the drum softly the trigger responds with a softer sound).



RED SHOT TRIGGERS



A low-cost alternative with great tracking ability, but with stripped-down mechanical construction, and 1/4" connectors.

RS:
RS KICK:
RS KIT:

ACOUSTIC PRO TRIGGERS



Superb tracking ability with easily replaceable transducer. Snare trigger reads head & rim separately. Secure XLR connector.

DTS:
TT:
TK:
TKIT:

CHROME ELITE TRIGGERS



Chrome Elite drum triggers represent our pinnacle of trigger construction and performance – in a brand-new chrome finish, with improved wiring harness and transducer for even better tracking, reliability & longevity.

CEDTS:
CETT:
CETK:
CETKIT:

RED SHOT TOUR PACK



A low-cost alternative with great tracking ability, but with stripped-down mechanical construction, and 1/4" connectors.

RS TOUR PACK

5pc Trigger Pack that includes:
 4 - Tom Triggers (single zone)
 1 - Kick Trigger
 5 - 6999 Cables for Toms and Kick triggers
 1 - Hard shell case for secure Transportation

ACOUSTIC PRO TOUR PACK



Superb tracking ability with easily replaceable transducer. Snare trigger reads head & rim separately. Secure XLR connector.

AP TOUR PACK

5pc Trigger Pack that includes:
 3 - Tom Triggers (single zone)
 1 - Kick Trigger
 1 - Dual zone Snare Trigger
 1 - Y cable for dual zone snare Trigger
 4 - 6999 Cables for Toms and Kick triggers
 1 - Hard shell case for secure Transportation

CHROME ELITE TOUR PACK



The Chrome Elite Trigger Tour Pack features everything you need to hit the road. Features CE Chrome Elite Trigger pack with all cables necessary. Includes a Snare Y cable to utilize Head and Rim shots separately. Everything comes in a **heavy duty** hard-shell travel case with foam interior.

CE TOUR PACK

5pc Trigger Pack that includes:
 3 Tom Triggers (single zone)
 1 kick Trigger
 1 - Dual zone Snare Trigger
 1 - Y cable for dual zone snare Trigger
 4 - 6999 Cables for Toms and Kick triggers
 1 - Hard shell case for secure Transportation

DDRUM TRIGGER TUBE



ddrum Trigger Tube. Classic reissue. The Trigger tube is a single zone pad used to trigger sound samples. Its sleek design enables players to incorporate electronics into their setup without sacrificing much room within the setup.

*Includes ddrum XLR Cable

TRIGGER TUBE

5pc Trigger Pack that includes:
 3 Tom Triggers (single zone)
 1 kick Trigger
 1 - Dual zone Snare Trigger
 1 - Y cable for dual zone snare Trigger
 4 - 6999 Cables for Toms and Kick triggers
 1 - Hard shell case for secure Transportation

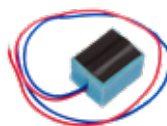
TRIGGER TRANSDUCER



CE TRANSDUCER

Replacement Transducer for Chrome Elite trigger series.

TRIGGER TRANSDUCER



5005 (TRIGGER TRANSDUCER)

Replacement Transducer for The Pro Acoustic, Red shot and the discontinued DRT Trigger Series.



Student Snare Drum Pack



SDSTUPAK

- 1mm thick steel shell
- 10 lugs
- Triple flanged hoops
- Includes concert height snare
- 1 rubber practice pad
- 1 pair of 5B drum sticks
- One carrying bag that holds both the snare and the stands.

Economy Stick Bag



DDSTIKBAG

ddrum Stickbag for all your Percussion tools! This economy stickbag has enough room to store Mallets, sticks, tools and other small accessories. A must for the on the go drummer! Please note, no sticks included.

Deluxe Stick Bag



DDSTIKBAGBD

Deluxe Stickbag for all your Percussion tools! This deluxe bag has enough room to store Mallets, sticks, tools and other small accessories. A must for the on the go drummer! Please note, no sticks included.

Stick Pack



DDSTIKPAKBLAK

Great accessory for any drummer on the run. The bag is a standard Backpack with a detachable stick bag! Use this bag to carry your laptop, drum accessories and of course your sticks! Even has a holder for your drink!

Synthetic Leather Snare Drum Bag



DDBAGSD7X14

- ddrum heavy duty synthetic leather snare case
- Includes heavy duty straps for easy transport
- Black nylon interior
- 6mm thick inner padding
- Will fit snare drums 6.5 to 8 inches deep

Synthetic Leather Snare Drum Bag



DDBAGSD5.5X14

- ddrum heavy duty synthetic leather snare case
- Includes heavy duty straps for easy transport
- Black nylon interior
- 6mm thick inner padding
- Will fit snare drums 5 to 6 inches deep

Snare Drum Bag



DDBAGSD7X14BLK

- Heavy duty nylon construction.
- Heavy duty zipper
- Oversized bag to easily fit your snare drum
- 6mm padding and soft inside to protect your investment
- Will fit drums from 6-7 inches deep
- Carrying straps for easy transportation
- ddrum logo on the front of the bag

Snare Drum Bag



DDBAGSD5.5X14BLK

- Heavy duty nylon construction.
- Heavy duty zipper
- Oversized bag to easily fit your snare drum
- 6mm padding and soft inside to protect your investment
- Will fit drums from 5-6 inches deep
- Carrying straps for easy transportation
- ddrum logo on the front of the bag



T-Shirt: Mask

DDMASK

Black ddrum Mask T-Shirt
Size: Small - XXL



T-Shirt: ddrum United

TSHIRTTDDRUMUNITED

Red ddrum United T-Shirt
Size: Small - XXL



T-Shirt: Hoop

TSHIRTTDDRUMHOOP

Black ddrum Hoop Logo T-Shirt
Size: Medium - XXL



Beanie Cap

DDBCAP

Black Beanie Cap
Red ddrum hoop logo
One Size fits all



Wrist Bands

WBDDRUMPR

Black Wrist Bands
Red ddrum hoop logo
One Size fits all
Comes with 2



White Logo Decal

LOGODDDRUMWHT

ddrum Bass drum logo decal.
Made specially for bass drum heads



Black Logo Decal

LOGODDDRUMBLK

ddrum Bass drum logo decal.
Made specially for bass drum heads



ddrum®

www.ddrum.com

 [ddrumusa](#)  [ddrumusa](#)  [ddrumusa](#)  [ddrumofficial](#)